



# TEST REPORT

98, Gyoyukwon-ro, Gwacheon-si, Gyeonggi-do, 13810, Korea

TEL 82-41-589-0010

FAX 82-41-589-0012

Report No. : TAK-2024-016529

Receipt Date : Jan.24.2024

Customer : Lee Suckwoo

Test Date : Feb.07.2024

Company name : Saint-Gobain Isover Korea Co.,Ltd

Address : 1F, 70, Bugokgongdan 1-gil, Songak-eup, Dangjin-si, Chungcheongnam-do, Republic of Korea

Sample : Glass Wool

Testing Date : Jan.24.2024 ~ Feb.07.2024

Testing Environment : Temperature (20 ± 5)°C, Relative humidity (40 ± 20) %

Test method : Refer to following pages

Test result : Refer to following pages

Attachment : Flow chart and Sample pictures

USAGE : QUALITY CONTROL

- NOTE : 1. The test results on this test report are only limited to the samples and sample names provided by the customer and KTR does not guarantee the quality of all products of the customer, and you can confirm the authenticity of the test report online ([www.ktr.or.kr](http://www.ktr.or.kr)) or by using the QR code.
2. This test report shall not be used for public relation, advertisement, lawsuit and any other purposes outside the scope of its defined usage.
3. Only original copy (including certified copy) of the test report is valid – electronic copy (hard and/or soft) is for your reference only.

*Park Jung-ae*

Prepared by Park Jung-ae

Tel : 02-2092-3673

*Hwang Beomgoo*

Reviewed by Hwang Beomgoo

Technical Manager

Tel : 1577-0091(ARS ①→④)

Feb.07.2024

**Korea Testing & Research Institute**

President

*Kim Hyun cheol*

QR Code to verify Genuineness



# TEST REPORT

Report No. : TAK-2024-016529

Sample : Glass Wool

## TEST RESULT

| Test itmes       | Unit  | Sample | Results      | MDL | Test Methods                      |
|------------------|-------|--------|--------------|-----|-----------------------------------|
| Pb               | mg/kg | -      | 24           | 10  | applied IEC 62321-5 Ed.1.0:2013   |
| Cd               | mg/kg | -      | Not detected | 1   | applied IEC 62321-5 Ed.1.0:2013   |
| Hg               | mg/kg | -      | Not detected | 1   | applied IEC 62321-4 Ed.1.1:2017   |
| Cr <sup>6+</sup> | mg/kg | -      | Not detected | 8   | applied IEC 62321-7-2 Ed.1.0:2017 |
| Total-PBBs       | mg/kg | -      | Not detected | -   | applied IEC 62321-6 Ed.1.0:2015   |
| Mono-BB          | mg/kg | -      | Not detected | 10  | applied IEC 62321-6 Ed.1.0:2015   |
| Di-BB            | mg/kg | -      | Not detected | 10  | applied IEC 62321-6 Ed.1.0:2015   |
| Tri-BB           | mg/kg | -      | Not detected | 10  | applied IEC 62321-6 Ed.1.0:2015   |
| Tetra-BB         | mg/kg | -      | Not detected | 10  | applied IEC 62321-6 Ed.1.0:2015   |
| Penta-BB         | mg/kg | -      | Not detected | 10  | applied IEC 62321-6 Ed.1.0:2015   |
| Hexa-BB          | mg/kg | -      | Not detected | 10  | applied IEC 62321-6 Ed.1.0:2015   |
| Hepta-BB         | mg/kg | -      | Not detected | 10  | applied IEC 62321-6 Ed.1.0:2015   |
| Octa-BB          | mg/kg | -      | Not detected | 10  | applied IEC 62321-6 Ed.1.0:2015   |
| Nona-BB          | mg/kg | -      | Not detected | 10  | applied IEC 62321-6 Ed.1.0:2015   |
| Deca-BB          | mg/kg | -      | Not detected | 10  | applied IEC 62321-6 Ed.1.0:2015   |
| Total-PBDEs      | mg/kg | -      | Not detected | -   | applied IEC 62321-6 Ed.1.0:2015   |
| Mono-BDE         | mg/kg | -      | Not detected | 10  | applied IEC 62321-6 Ed.1.0:2015   |
| Di-BDE           | mg/kg | -      | Not detected | 10  | applied IEC 62321-6 Ed.1.0:2015   |
| Tri-BDE          | mg/kg | -      | Not detected | 10  | applied IEC 62321-6 Ed.1.0:2015   |
| Tetra-BDE        | mg/kg | -      | Not detected | 10  | applied IEC 62321-6 Ed.1.0:2015   |
| Penta-BDE        | mg/kg | -      | Not detected | 10  | applied IEC 62321-6 Ed.1.0:2015   |
| Hexa-BDE         | mg/kg | -      | Not detected | 10  | applied IEC 62321-6 Ed.1.0:2015   |
| Hepta-BDE        | mg/kg | -      | Not detected | 10  | applied IEC 62321-6 Ed.1.0:2015   |
| Octa-BDE         | mg/kg | -      | Not detected | 10  | applied IEC 62321-6 Ed.1.0:2015   |
| Nona-BDE         | mg/kg | -      | Not detected | 10  | applied IEC 62321-6 Ed.1.0:2015   |
| Deca-BDE         | mg/kg | -      | Not detected | 10  | applied IEC 62321-6 Ed.1.0:2015   |
| DEHP             | mg/kg | -      | Not Detected | 50  | applied IEC 62321-8 Ed.1.0:2017   |



# TEST REPORT

Report No. : TAK-2024-016529

Sample : Glass Wool

## TEST RESULT

| Test itmes | Unit  | Sample | Results      | MDL | Test Methods                    |
|------------|-------|--------|--------------|-----|---------------------------------|
| BBP        | mg/kg | -      | Not Detected | 50  | applied IEC 62321-8 Ed.1.0:2017 |
| DBP        | mg/kg | -      | Not Detected | 50  | applied IEC 62321-8 Ed.1.0:2017 |
| DIBP       | mg/kg | -      | Not Detected | 50  | applied IEC 62321-8 Ed.1.0:2017 |
| HBCDD      | mg/kg | -      | Not detected | 10  | applied KS M 1072:2016          |

Notes : mg/kg = ppm (parts per million)

N.D = Not detected( <MDL)

MDL = Method detection limit

- Method Detection Limit -

HBCDD(Hexabromocyclododecane) : 10 mg/kg

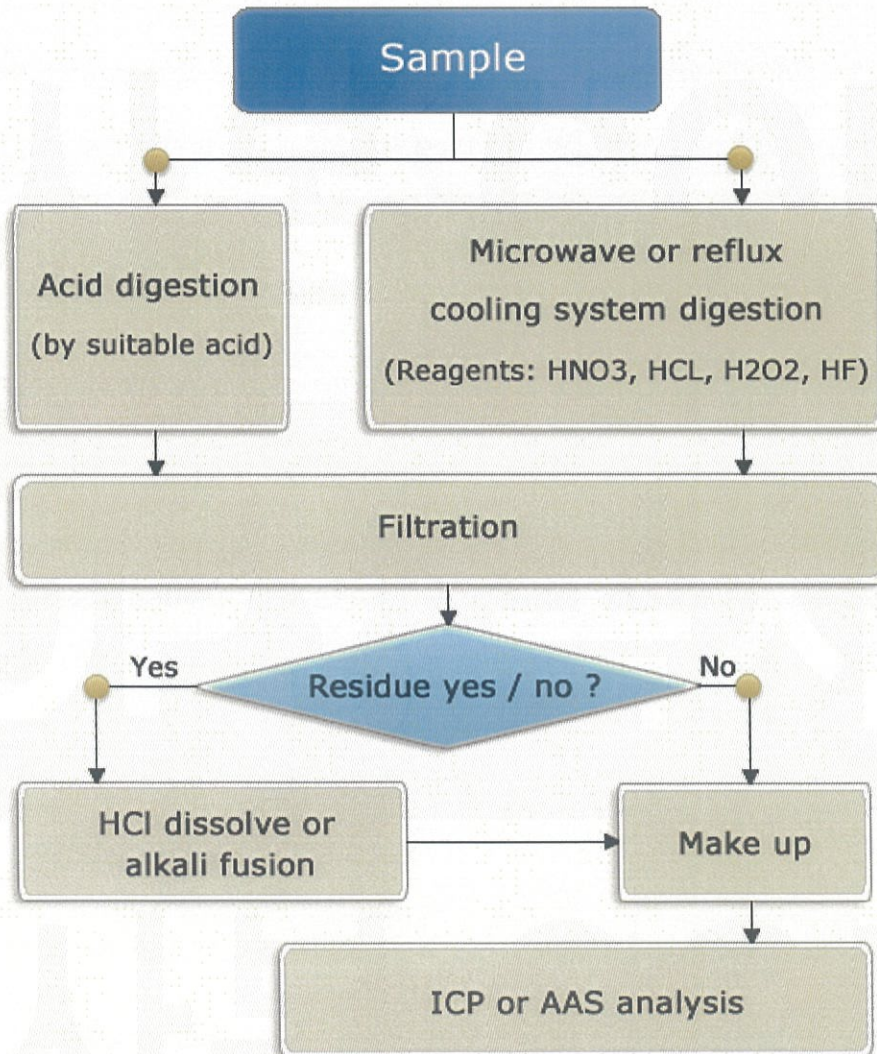
# TEST REPORT

Report No. : TAK-2024-016529

Sample : Glass Wool

Pb, Cd, Hg : Tested by Park Sehwan(Tel : 02-2092-3668)

## Flow Chart of heavy metals analysis



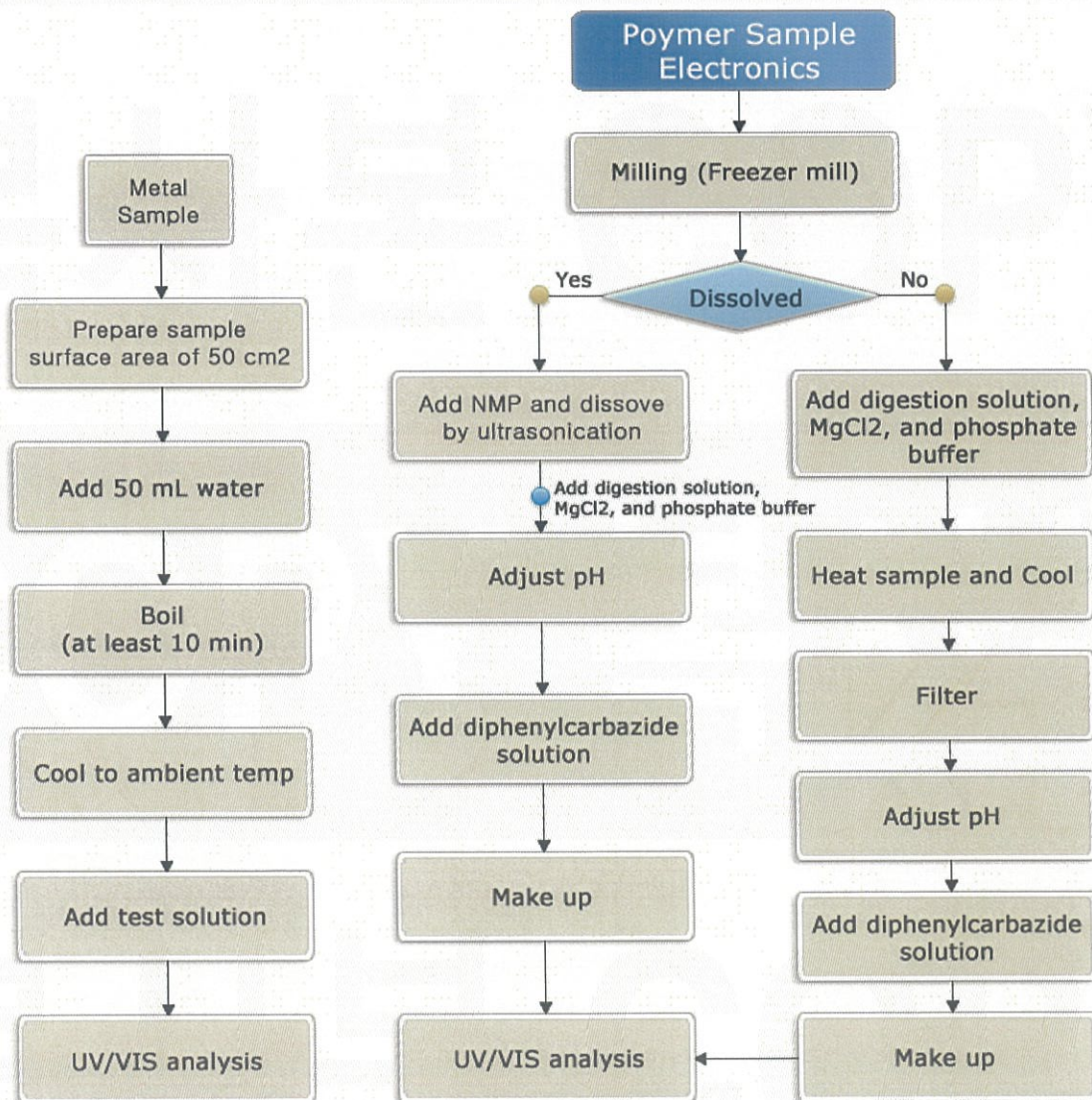
# TEST REPORT

Report No. : TAK-2024-016529

Sample : Glass Wool

Cr<sup>6+</sup> : Tested by Park Sehwan(Tel : 02-2092-3668)

## Flow Chart of Cr<sup>6+</sup> analysis





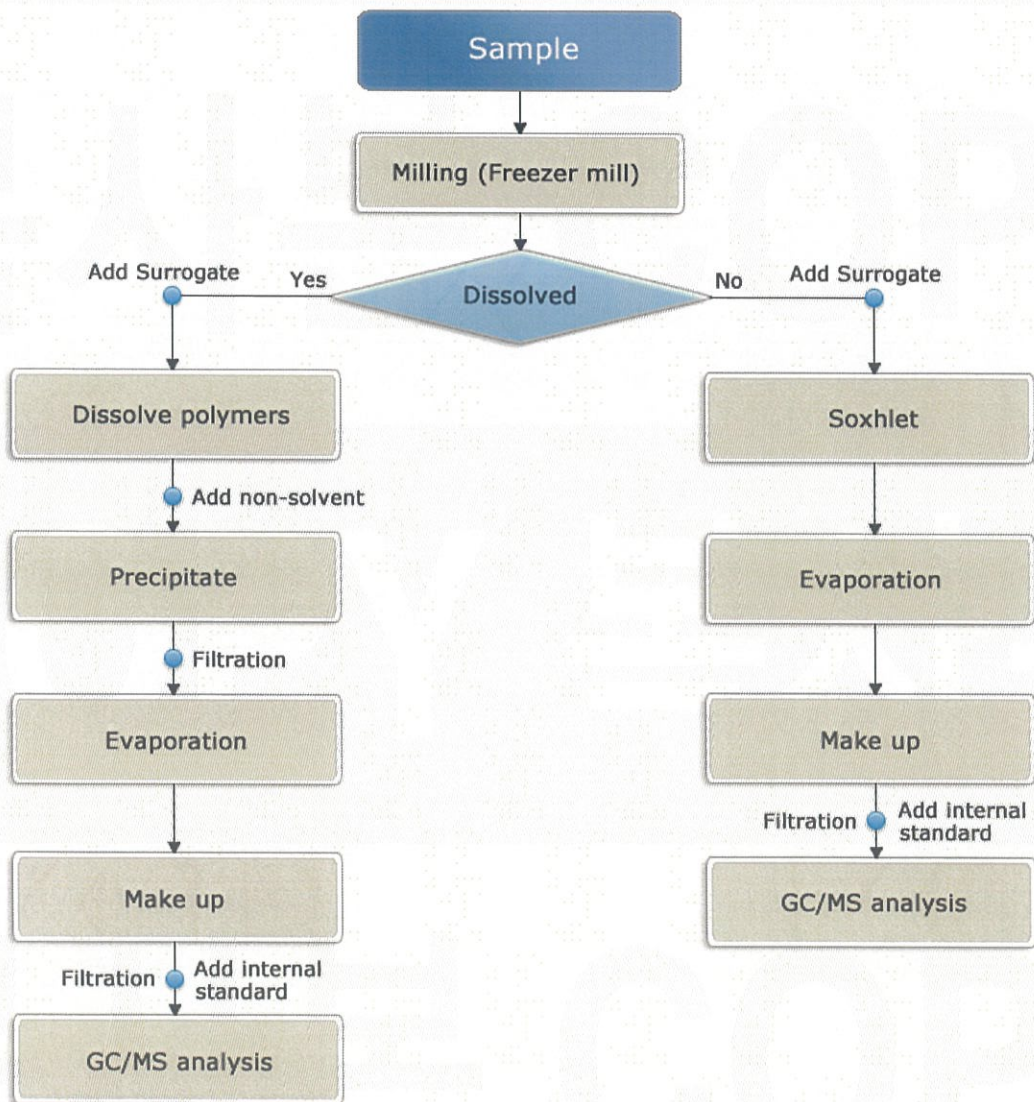
# TEST REPORT

Report No. : TAK-2024-016529

Sample : Glass Wool

PBBs, PBDEs : Tested by Park Jung-ae(Tel : 02-2092-3673)

## Flow Chart of PBBs and PBDEs analysis





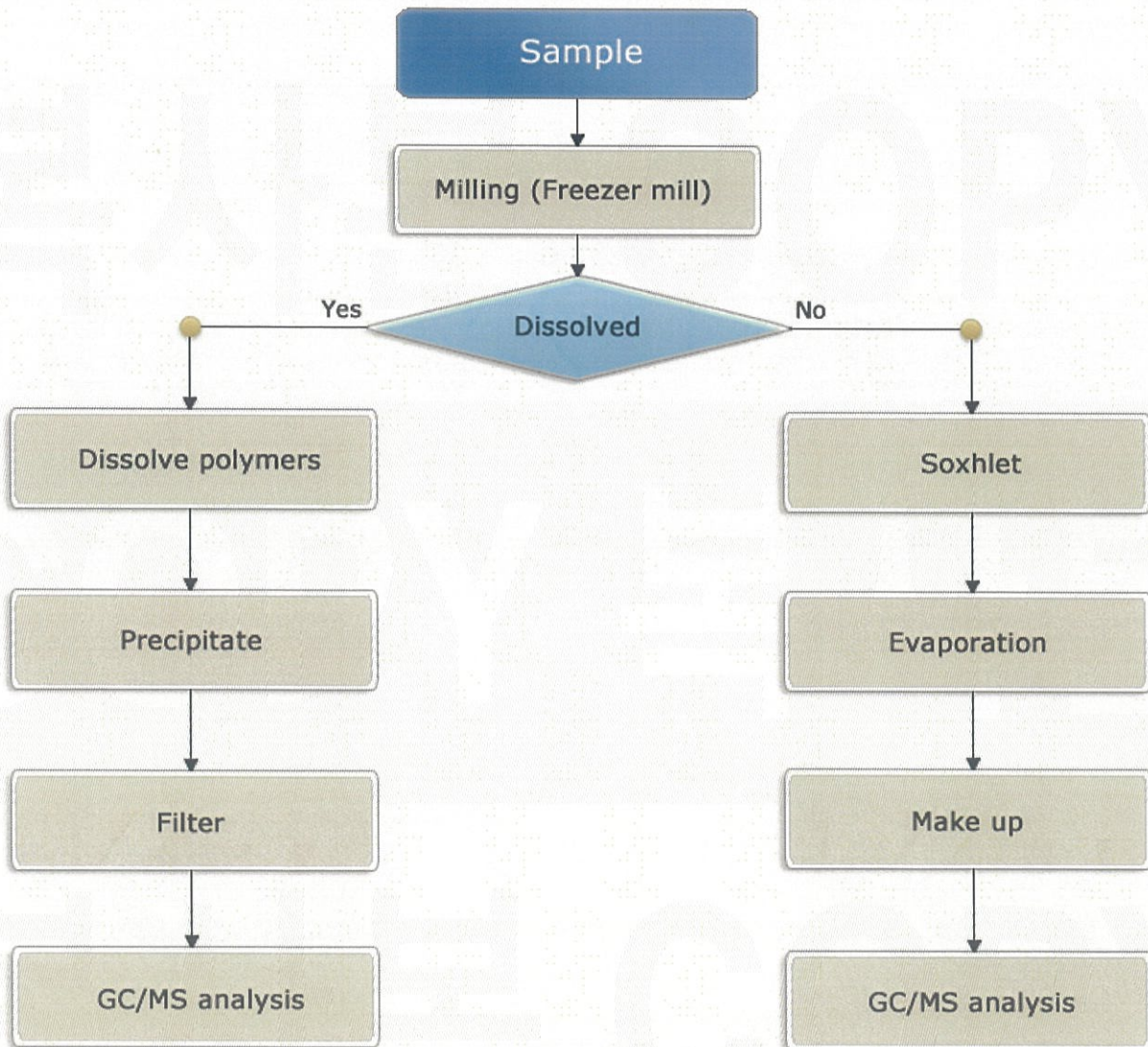
# TEST REPORT

Report No. : TAK-2024-016529

Sample : Glass Wool

Phthalates : Tested by Park Jimin(Tel : 02-2092-3676)

## Flow Chart of Phthalates analysis





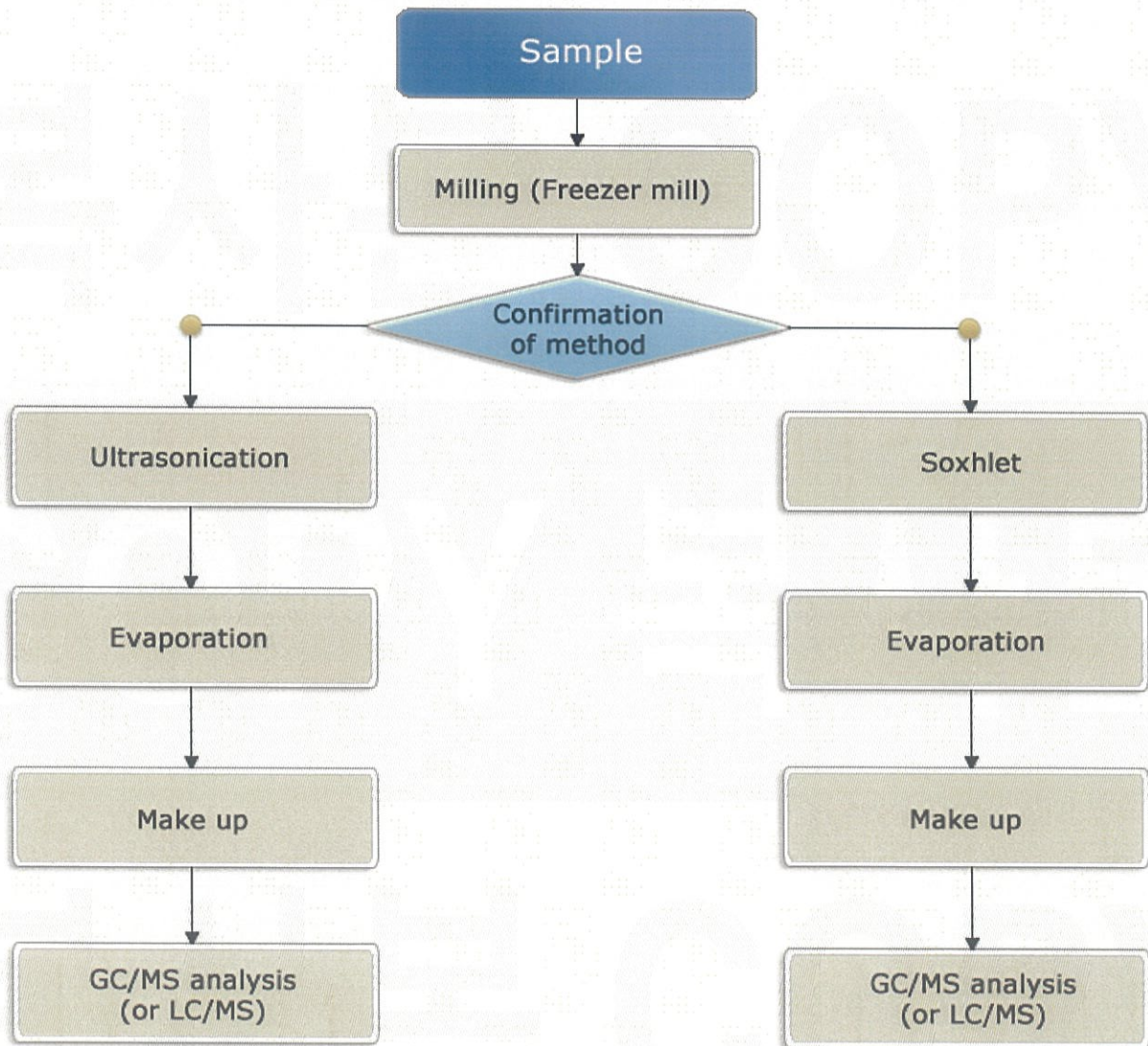
# TEST REPORT

Report No. : TAK-2024-016529

Sample : Glass Wool

HBCD(HBCDD) : Tested by Park Jung-ae(Tel : 02-2092-3673)

## Flow Chart of HBCD(HBCDD) analysis



# TEST REPORT

Report No. : TAK-2024-016529

Sample : Glass Wool

## Sample



- End of Report -