

# Time to focus on **visual acoustics**



**Ecophon**<sup>®</sup>  
SAINT-GOBAIN

A SOUND EFFECT ON PEOPLE

# Focus

## on the eye and the ear

*Our eyes and ears are the gateways to our minds, and their perceptions affect our wellbeing and productivity. That is why visual and acoustic design are equally important when creating indoor environments.*

*Ecophon Focus™ caters for both, offering stunning visual acoustics. Delighting the eyes while soothing the ears.*

### Entering a universe of design flexibility

Ecophon Focus™ is our most comprehensive product family, created with people and their activities in mind. Suspended wall-to-wall ceilings with excellent acoustic properties, appealing looks and the flexibility to suit every need make the Focus family the perfect toolbox.

- 10 edges – offering a wide range of design possibilities
- 11 sizes – allowing you to choose just the right appearance
- 16 colours – a range of natural and attractive colour options
- 3 lighting solutions – optimal integration of exclusive Ecophon lighting
- 6 unique additional solutions – for stylish level changes, wall endings and free-hanging ceilings

Stay updated on the latest Focus news at [ecophon.com](http://ecophon.com)

This publication shows products from Ecophon product range and those of other suppliers. The specifications are intended to provide a general guide to which products are most suitable for the preferences indicated. Technical data is based on results obtained under typical testing conditions or long experience in normal conditions. The specified functions and properties for products and systems are only valid on condition that instructions, installation diagrams, installation guides, maintenance instructions and other stated conditions and recommendations have been taken into consideration and followed. Deviation from this, such as changing specific components or products, will mean that Ecophon cannot be held responsible for the function, consequences and properties of the products. All descriptions, illustrations and dimensions contained in this brochure represent general information and shall not form part of any contract. Ecophon reserves the right to change products without prior notice. We disclaim any liability for misprints. For the latest information go to [www.ecophon.com](http://www.ecophon.com) or contact your nearest Ecophon representative.

© Ecophon Group 2017  
Idea and layout: navigator. Printer: Skånetryck AB. Cover: Getty Images/CCat82/Navigator





Ecophon Focus™ Lp  
600x600 mm, Akutex™ FT  
White Frost and Silk Slate



Ecophon Focus™ Ds 600x600 mm,  
Ecophon Focus™ Fixform Ds 1200x600 mm,  
Akutex™ FT White Frost



# Focus on visual design

When entering an indoor environment it's hard to ignore the visual impression. With roots in Swedish design tradition, Ecophon Focus™ offers a wide range of design options with the flexibility to choose colours, edges, panel sizes, grid visibility and lighting. With Focus it's easy to create a unique expression perfectly in line with the overall architecture.

## **Blend in...**

Ecophon Focus™ can create a subtle accent, quietly supporting the overall interior design by following the lines and shapes of the room.

## **... or make a statement**

But Ecophon Focus™ can also be bold and brave, by emphasizing colours and lines to create an eye-catching feature in the interior design.

See more images at [ecophon.com](http://ecophon.com)

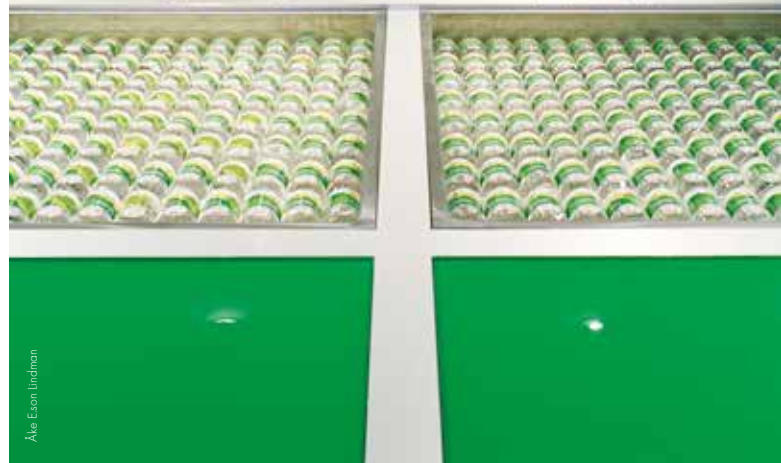




Ecophon Focus™ Lp  
in various sizes,  
Akutex™ FT  
Volcanic Ash



Ecophon Focus™ Ds 1200x1200 mm,  
Akutex™ FT White Frost



Ale Esen Lindman



Ecophon Focus™ D/A 1720x600 mm,  
Akutex™ FT White Frost

Mathijs van Reen





ZENBER Interieur



Memo Emmark

Ecophon Focus™ Ds 1200x1200 mm,  
Akutex™ FT White Frost



Perard Johnson/Studio.se

Ecophon Focus™ E 600x600 mm,  
Akutex™ FT White Frost



Studio VHF

Ecophon Focus™ Ds 600x600 mm,  
Akutex™ FT White Frost, Ecophon Dot™ LED



Ecophon Focus™ Lp in various sizes,  
Akutex™ FT White Frost, Ecophon Line™ LED



# Focus

## on acoustic design

People perform very different tasks in an open-plan office, a classroom or a hospital ward. To enable people to perform to the best of their ability, every indoor environment must be designed to suit the designated activity. That's why Ecophon has developed Activity Based Acoustic Design. By defining the needs from three perspectives, you can find the optimal acoustic solution for every indoor activity and space.

- **Activity**

What will people do in the space? Computer work, phone calls and team activities all have their own specific prerequisites.

- **People**

Who are the people performing the activity? The age group, the number of people and any special needs are all factors to consider.

- **Space**

What are the physical properties of the space itself? It's size, its location within the building and the building materials used are important aspects to take into account.

Learn more about acoustic design at [ecophon.com](https://ecophon.com)

Ecophon Focus™ Dg 1800x600 mm,  
Ecophon Focus™ Frieze, Akutex™ FT White Frost



# Focus on size

With Ecophon Focus™ you can choose from eleven different panel sizes. The large sizes are unique on the market and only offered by Ecophon.

Learn more about sizes at [ecophon.com](https://ecophon.com)

**10 edges**  
offering a wide range of design  
possibilities



Ecophon Focus™ SQ 1200x600 mm,  
Akutex™ FT White Frost



**11 sizes**

allowing you to choose just  
the right appearance

# Focus on the edge

A total of ten different edge options makes Ecophon Focus™ flexible in terms of design. Edges can be made visible to emphasize the direction of the room or create distinctive patterns, or concealed for a more seamless look.

Learn more about edges at [ecophon.com](http://ecophon.com)

Ecophon Focus™ Ds 600x600 mm,  
Ecophon Focus™ Ds Level change,  
Akutex™ FT White Frost and Dark Diamond



# Focus on the grid

Connect™ is Ecophon's grid system in galvanized steel with excellent load bearing capacity. The different Focus products can make the grid visible, partly visible (recessed) or concealed. Choose from three colours: white, grey and black.

Learn more about Connect™ at [ecophon.com](http://ecophon.com)

Connect™ T15 and T24,  
White, Grey and Black

Richard Johnson / Studoe.se

Ecophon Focus™ Dg,  
Connect™ T24, Black

Studoe.se

Ecophon Focus™  
Lp in various sizes,  
Akutex™ FT White  
Frost and Silk Slate.

## 16 colours

a range of natural and attractive  
colour options

Richard Johnson / Studoe.se



Ecophon Focus™ E 600x600 mm,  
Ecophon Focus™ Fixiform E 1200x600,  
Akutex™ FT White Frost and Summer Breeze



123RF / Moodboard / Studio ease

# Focus on colour

Akutex™ FT is a unique and superior surface developed by Ecophon. It has great light reflectance properties and in combination with the glass wool, Akutex™ FT provides optimal acoustics. The updated colour range includes sixteen attractive colours inspired by nature.

Learn more about our colours at [ecophon.com](https://www.ecophon.com)

Ecophon Focus™ A  
1800x600 mm,  
Akutex™ FT White Frost



Studio Vite

# Focus on lighting

Easy integration with lighting and ventilation is a major benefit with Ecophon Focus™. Ecophon offers three compatible luminaires designed to fit in wherever good lighting is needed: Ecophon Dot™ LED, Ecophon Square 43™ LED and Ecophon Line™ LED.

Learn more about integration at [ecophon.com](http://ecophon.com)

## 3 lighting solutions

optimal integration of  
exclusive Ecophon lighting

Ecophon Focus™ Lp  
in various sizes,  
Ecophon Line™ LED

Rickard Johnsson/Studio.se

Ecophon Focus™ Ds  
600x600 mm,  
Ecophon Square 43™ LED

Rickard Johnsson/Studio.se

Ecophon Focus™ Ds  
600x600 mm,  
Ecophon Dot™ LED

Rickard Johnsson/Studio.se

Ecophon Focus™ Ds  
1200x600 mm,  
Ecophon Focus™ Wing™  
1200x200 mm,  
Akutex™ FT White Frost

Rickard Johnsson/Studio.se

**6 unique  
additional solutions**  
for stylish level changes, wall  
endings and free-hanging ceilings



Ecophon Focus™ E 1200x600,  
Ecophon Focus™ Frieze, Akutex™ FT White Frost

# Focus on transitions

In the Ecophon Focus™ family, there are six unique additional solutions for level changes, wall endings and free-hanging ceilings. They are designed to give the ceiling an integrated appearance that enhances the overall aesthetic appeal.

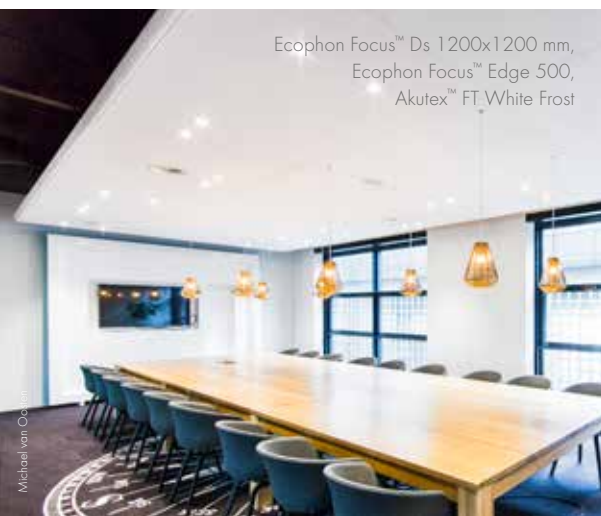
Learn more about our unique solutions at [ecophon.com](http://ecophon.com)

Martin Pahlen



Ecophon Focus™ Flexiform A 1200x600 mm,  
Akutex™ FT White Frost

Szymon Polanski



Ecophon Focus™ Ds 1200x1200 mm,  
Ecophon Focus™ Edge 500,  
Akutex™ FT White Frost

Michael van Oort



Ecophon Focus™ Ds 600x600 mm, Ecophon Focus™  
Fixiform Ds, Akutex™ FT White Frost

Hans Georg Endl



Ecophon Focus™ Ds 600x600 mm, Ecophon  
Focus™ Ds Level change, Akutex™ FT White Frost

123RF / Alexander Zeiger / studio.se

# Ecophon Focus™ overview

Edge design	Product	Absorption class	Connect grid	Sizes	
				150-1200 mm	XL
	Ecophon Focus™ A	A	T15 / T24	600x600x20, 1200x600x20, 1200x1200x20	1600x600x20, 1800x600x20, 2000x600x20, 2400x600x20
	Ecophon Focus™ B	C	Direct fixing	600x600x20	
	Ecophon Focus™ Ds	A	T24	600x600x20, 1200x600x20, 1200x1200x20	1600x600x20, 1800x600x20, 2000x600x20, 2400x600x20
	Ecophon Focus™ Dg	A	T24	600x600x20, 1200x600x20, 1200x1200x25	1600x600x20, 1800x600x20, 2000x600x20, 2400x600x20
	Ecophon Focus™ D/A	A	T24 Bandraster		1720x300, 1720x600, 2000x600, 2400x600
	Ecophon Focus™ E	A	T15 / T24	600x600x20, 1200x600x20, 1200x1200x20	1600x600x20, 1800x600x20, 2000x600x20, 2400x600x20
	Ecophon Focus™ Ez	A	T24	600x600x40	
	Ecophon Focus™ F	C	Direct fixing	600x600x20, 1200x600x20	
	Ecophon Focus™ Lp	A	T24	600x150x20, 600x300x20, 600x600x20, 1200x150x20, 1200x300x20, 1200x600x20	1800x600x20
	Ecophon Focus™ SQ	C	Direct fixing	600x600x20, 1200x600x20	
	Ecophon Focus™ Edge 500		T24		2400x30x80
	Ecophon Focus™ Fixiform Ds	A	T24	1200x600x20	1500x600x20, 1900x600x20, 2300x600x20
	Ecophon Focus™ Fixiform E	A	T24	1200x600x20	
	Ecophon Focus™ Flexiform A	A	T24	1200x600x30	1600x600x30, 2000x600x30, 2400x600x30
	Ecophon Focus™ Frieze	A	T24		2400x600x20
	Ecophon Focus™ Wing	A	T24	1200x200x50	



Most Ecophon products comply with the emission requirements of Finland's leading information centre for the construction sector, the Building Information Foundation RTS. Products labelled M1, which is the best emission class, have the lowest emission values for a number of substances harmful to health.  
[www.rts.fi/english.htm](http://www.rts.fi/english.htm)

Focus Ez is not available for: Canada, China, India, Russia, Australia and Singapore.

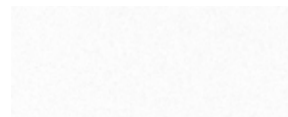


Ecophon Lighting	Possible combinations
	Focus Flexiform A, Focus Frieze
Ecophon Dot™ LED, Ecophon Line™ LED, Ecophon Square 43™ LED	Focus Ds Level change, Focus Edge 500, Focus Fixiform Ds, Focus Frieze, Focus Wing
Ecophon Dot™ LED, Ecophon Line™ LED, Ecophon Square 43™ LED	Focus Edge 500, Focus Frieze
Ecophon Dot™ LED, Ecophon Line™ LED, Ecophon Square 43™ LED	Focus Edge 500, Focus Fixiform E, Focus Frieze, Focus Wing
Ecophon Dot™ LED, Ecophon Square 43™ LED	
Ecophon Line™ LED	
	Focus Ds, Focus Dg, Focus E
	Focus Ds
	Focus E
	Focus A
	Focus A, Focus Ds, Focus Dg, Focus E
	Focus Ds, Focus E



The Akutex™ label guarantees that the product carrying it has a superior surface technology. Our research and development will always focus on visual aspects, acoustic properties, working environment, architectural trends and environmental aspects. This ensures that Akutex™ is always one step ahead.

## Colours – Akutex™ FT



### White frost

Nearest NCS colour sample S 0500-N  
Light reflectance 85%.



### Volcanic Ash

Nearest NCS colour sample 2002-Y  
Light reflectance 56%.



### Silver Stone

Nearest NCS colour sample S 4502-Y  
Light reflectance 29%.



### Silk Slate

Nearest NCS colour sample 7000-N  
Light reflectance 13%.



### Summer Breeze

Nearest NCS colour sample S 1515-B50G  
Light reflectance 54%.



### Silent Steam

Nearest NCS colour sample S 2010-B  
Light reflectance 45%.



### Ocean Storm

Nearest NCS colour sample S 4020-R90B  
Light reflectance 24%.



### Moonlight Sky

Nearest NCS colour sample S 7020-R90B  
Light reflectance 7%.



### Golden Field

Nearest NCS colour sample S 1040-G90Y  
Light reflectance 61%.



### Sunset Heat

Nearest NCS colour sample S 2070-Y60R  
Light reflectance 20%.



### Ruby Rock

Nearest NCS colour sample S 4050-R10B  
Light reflectance 7%.



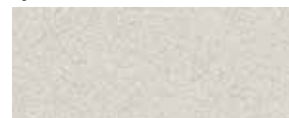
### Dark Diamond

Nearest NCS colour sample S 9000-N  
Light reflectance 4%.



### Morning Drizzle

Nearest NCS colour sample S 1002-B  
Light reflectance 69%.



### Cloudy Day

Nearest NCS colour sample S 1500-N  
Light reflectance 62%.



### Pale Pearl

Nearest NCS colour sample S 2005-R30B  
Light reflectance 55%.



### Highland Fog

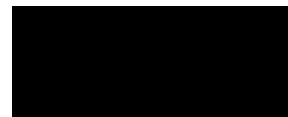
Nearest NCS colour sample S 2005-G  
Light reflectance 55%.

## Colours – Connect™ grid and Ecophon Focus™ Edge 500



### Connect white 01

Nearest NCS colour sample: S 0500-N  
Gloss 20



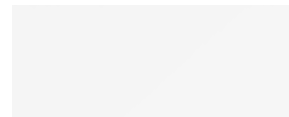
### Connect black 01 matt

Nearest NCS colour sample S 9000-N  
Gloss 3



### Connect grey 01 metallic

Nearest NCS colour sample: S 2502-B  
Natural variation in gloss and colour can occur.



### Focus Edge 500

Nearest NCS colour sample: S 0500-N  
Gloss 2



A SOUND EFFECT ON PEOPLE

Ecophon is the leading supplier of acoustic solutions. We contribute to healthier indoor environments, improving quality of life, wellbeing and working performance. As evolution has adapted the human senses to a life outdoors, our focus is to bring the ideal acoustic environments of nature into our modern indoor spaces. We know they will have a sound effect on people.



The principles guiding our work are grounded in our Swedish heritage, where a human approach and a common responsibility for people's lives and future challenges come naturally.

Ecophon is part of the Saint-Gobain Group, a world leader in sustainable habitat solutions. This is also one of the top 100 industrial groups in the world, constantly innovating to make living spaces more comfortable and cost-efficient. Saint-Gobain offer solutions to the major challenges of energy efficiency and environmental protection. No matter what new needs emerge in the habitat and construction markets, the future is made of Saint-Gobain.