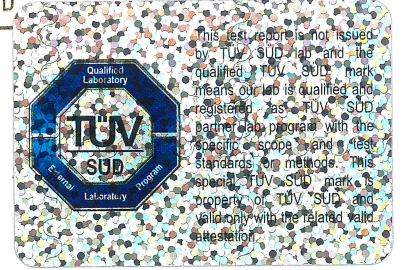




TEST REPORT



98, Gyoyukwon-ro, Gwacheon-si, Gyeonggi-do, 13810, Korea

TEL 82-41-589-0010 FAX 82-41-589-0012

Report No. : TAK-2018-009388

Receipt Date : Jan.15.2018

Customer : Lee Suckwoo

Test Date : Jan.25.2018

Saint-Gobain Isover Korea Co.,Ltd

1F, 70, Bugokgongdan 1-gil, Songak-eup, Dangjin-si, Chungcheongnam-do, Republic of Korea

Sample : Glass Wool

Testing Date : Jan.15.2018 ~ Jan.25.2018

Testing Environment : Temperature (20 ± 5)°C, Relative humidity (40 ± 20) %

Test method : Refer to following pages

Test result : Refer to following pages

Attachment : Flow chart and Sample pictures

USAGE : QUALITY CONTROL

- NOTE : 1. The test results on this test report are only limited to the samples and sample names provided by the customer and KTR does not guarantee the quality of all products of the customer, and you can confirm the authenticity of the test report online (www.ktr.or.kr) or by using the QR code.
2. This test report shall not be used for public relation, advertisement, lawsuit and any other purposes outside the scope of its defined usage.
3. Only original copy (including certified copy) of the test report is valid – electronic copy (hard and/or soft) is for your reference only.

yoo ji yeoun

Prepared by yoo ji yeoun

E-mail: jyohoh@ktr.or.kr

Kim Sun-il

Reviewed by Kim Sun-il

Technical Manager

Tel : 1577-0091(ARS ①→④)

Jan.25.2018

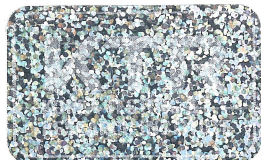
Korea Testing & Research Institute

President

Byun, Jong-Rip



QR Code to verify Genuineness



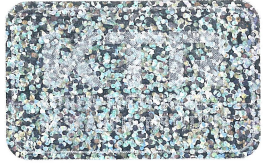
TEST REPORT

Report No. : TAK-2018-009388

Sample : Glass Wool

TEST RESULT

Test itmes	Unit	Sample	Results	MDL	Test Methods
Pb	mg/kg	-	Not Detected	10	IEC 62321-5 Ed. 1.0 : 2013(AAS, Apply Correspondingly)
Cd	mg/kg	-	Not Detected	1	IEC 62321-5 Ed. 1.0 : 2013(AAS, Apply Correspondingly)
Hg	mg/kg	-	Not Detected	1	IEC 62321-4 Ed. 1.0 : 2013(CV-AAS, Apply Correspondingly)
Cr6+	mg/kg	-	Not Detected	5	IEC 62321-7-2 Ed. 1.0 : 2017(UV/Vis, Apply Correspondingly)
Total-PBBs	mg/kg	-	Not Detected	-	IEC 62321-6 Ed. 1.0 : 2015(GC/MS, Apply Correspondingly)
Mono-BB	mg/kg	-	Not Detected	10	IEC 62321-6 Ed. 1.0 : 2015(GC/MS, Apply Correspondingly)
Di-BB	mg/kg	-	Not Detected	10	IEC 62321-6 Ed. 1.0 : 2015(GC/MS, Apply Correspondingly)
Tri-BB	mg/kg	-	Not Detected	10	IEC 62321-6 Ed. 1.0 : 2015(GC/MS, Apply Correspondingly)
Tetra-BB	mg/kg	-	Not Detected	10	IEC 62321-6 Ed. 1.0 : 2015(GC/MS, Apply Correspondingly)
Penta-BB	mg/kg	-	Not Detected	10	IEC 62321-6 Ed. 1.0 : 2015(GC/MS, Apply Correspondingly)
Hexa-BB	mg/kg	-	Not Detected	10	IEC 62321-6 Ed. 1.0 : 2015(GC/MS, Apply Correspondingly)
Hepta-BB	mg/kg	-	Not Detected	0	IEC 62321-6 Ed. 1.0 : 2015(GC/MS, Apply Correspondingly)
Octa-BB	mg/kg	-	Not Detected	10	IEC 62321-6 Ed. 1.0 : 2015(GC/MS, Apply Correspondingly)
Nona-BB	mg/kg	-	Not Detected	10	IEC 62321-6 Ed. 1.0 : 2015(GC/MS, Apply Correspondingly)
Deca-BB	mg/kg	-	Not Detected	10	IEC 62321-6 Ed. 1.0 : 2015(GC/MS, Apply Correspondingly)
Total-PBDEs	mg/kg	-	Not Detected	-	IEC 62321-6 Ed. 1.0 : 2015(GC/MS, Apply Correspondingly)
Mono-BDE	mg/kg	-	Not Detected	10	IEC 62321-6 Ed. 1.0 : 2015(GC/MS, Apply Correspondingly)
Di-BDE	mg/kg	-	Not Detected	10	IEC 62321-6 Ed. 1.0 : 2015(GC/MS, Apply Correspondingly)
Tri-BDE	mg/kg	-	Not Detected	10	IEC 62321-6 Ed. 1.0 : 2015(GC/MS, Apply Correspondingly)
Tetra-BDE	mg/kg	-	Not Detected	10	IEC 62321-6 Ed. 1.0 : 2015(GC/MS, Apply Correspondingly)
Penta-BDE	mg/kg	-	Not Detected	10	IEC 62321-6 Ed. 1.0 : 2015(GC/MS, Apply Correspondingly)
Hexa-BDE	mg/kg	-	Not Detected	10	IEC 62321-6 Ed. 1.0 : 2015(GC/MS, Apply Correspondingly)
Hepta-BDE	mg/kg	-	Not Detected	10	IEC 62321-6 Ed. 1.0 : 2015(GC/MS, Apply Correspondingly)
Octa-BDE	mg/kg	-	Not Detected	10	IEC 62321-6 Ed. 1.0 : 2015(GC/MS, Apply Correspondingly)
Nona-BDE	mg/kg	-	Not Detected	10	IEC 62321-6 Ed. 1.0 : 2015(GC/MS, Apply Correspondingly)
Deca-BDE	mg/kg	-	Not Detected	10	IEC 62321-6 Ed. 1.0 : 2015(GC/MS, Apply Correspondingly)



TEST REPORT

Report No. : TAK-2018-009388

Sample : Glass Wool

TEST RESULT

Test itmes	Unit	Sample	Results	MDL	Test Methods
------------	------	--------	---------	-----	--------------

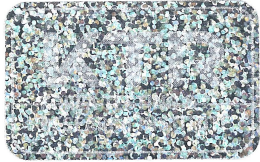
Notes : mg/kg = ppm (parts per million)
 N.D = Not detected(<MDL)
 MDL = Method detection limit

N

복사본 COPY

COPY 복사본

복사본 COPY



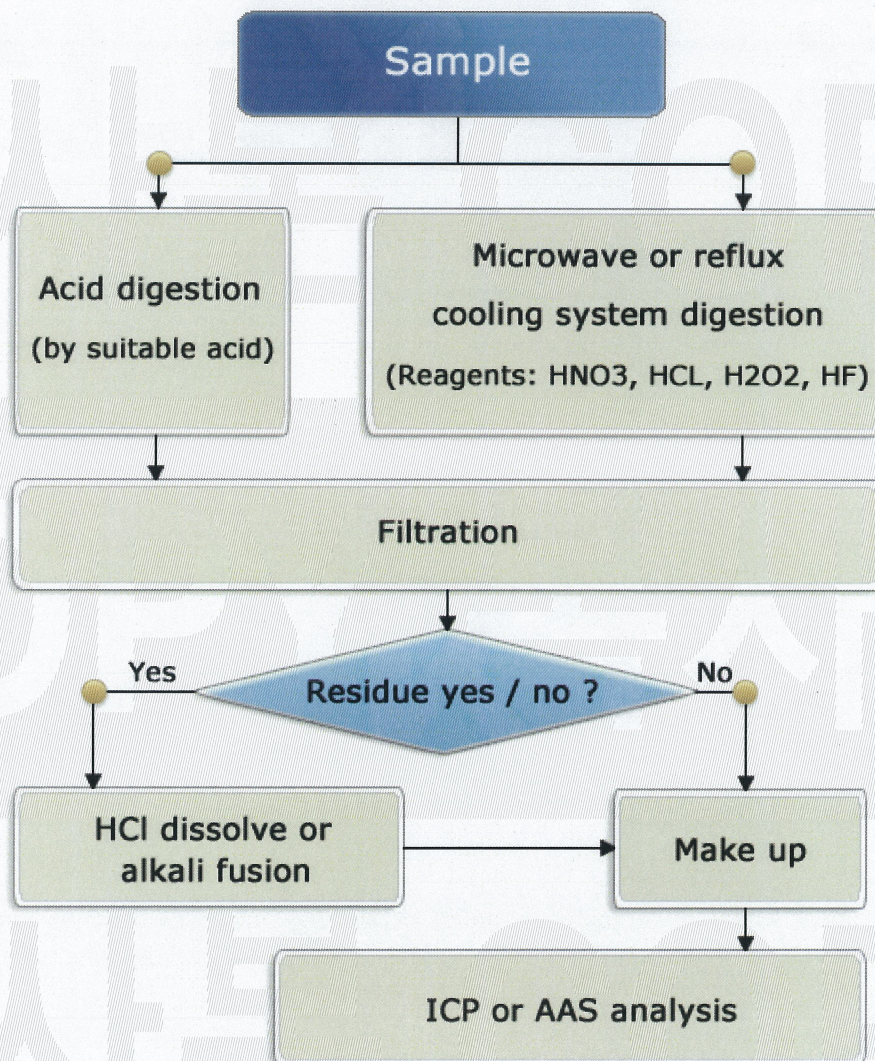
TEST REPORT

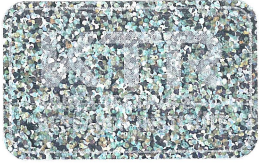
Report No. : TAK-2018-009388

Sample : Glass Wool

Pb, Cd, Hg : Tested by yoo ji yeoun(Tel : 02-2164-0174)

Flow Chart of heavy metals analysis





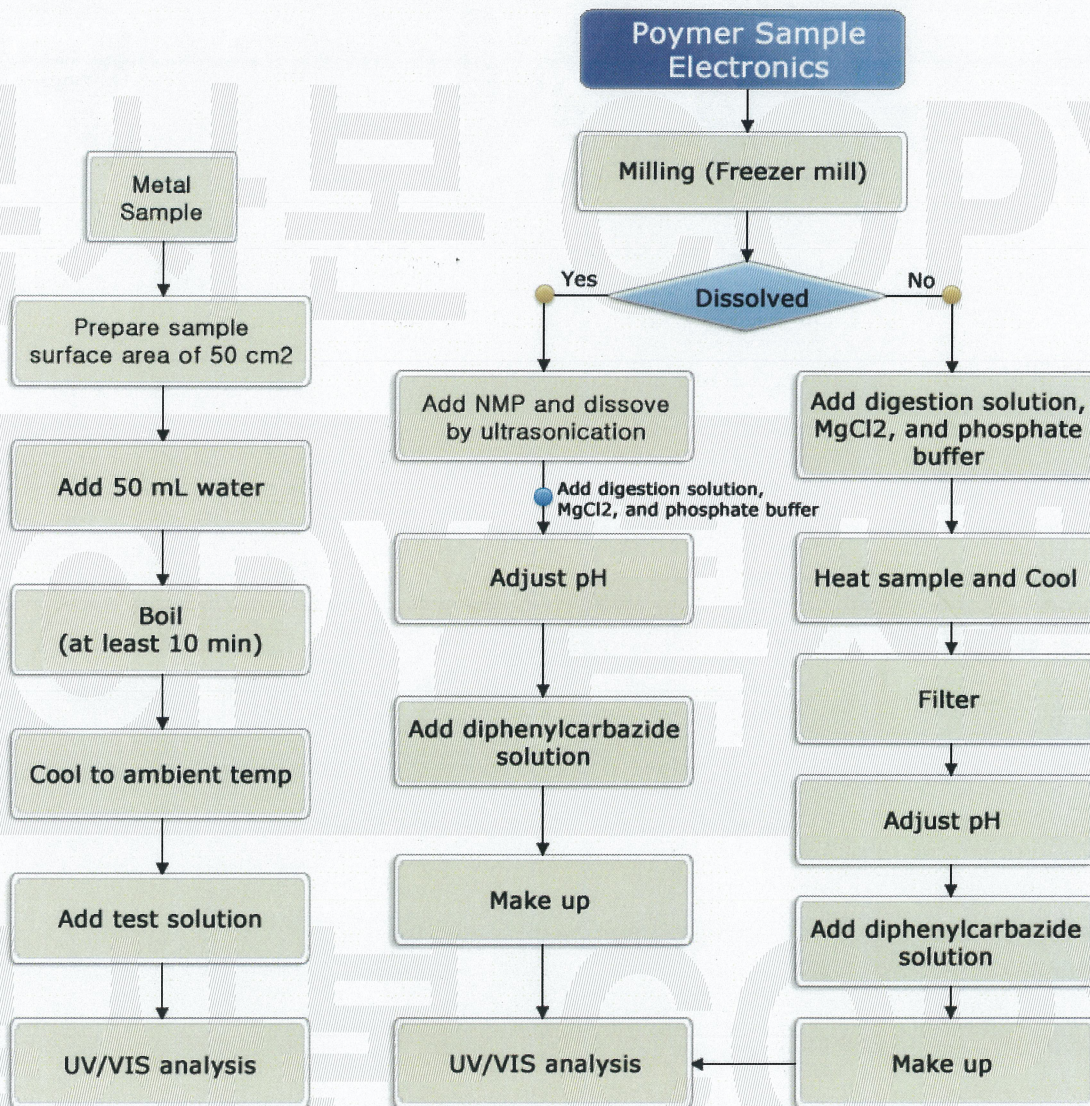
TEST REPORT

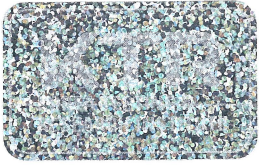
Report No. : TAK-2018-009388

Sample : Glass Wool

Cr⁶⁺ : Tested by yoo ji yeoun(Tel : 02-2164-0174)

Flow Chart of Cr⁶⁺ analysis





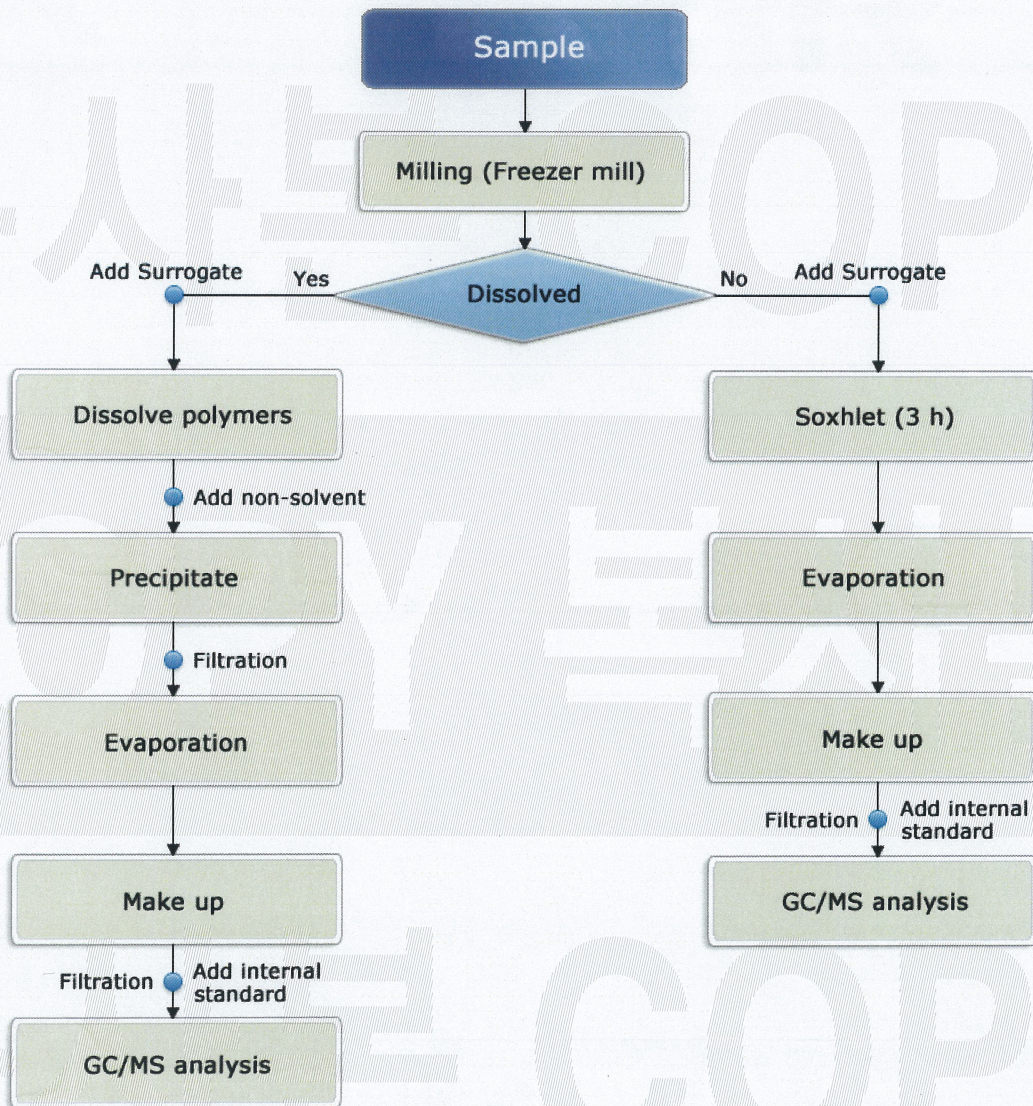
TEST REPORT

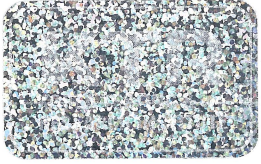
Report No. : TAK-2018-009388

Sample : Glass Wool

PBBs, PBDEs : Tested by yoo ji yeoun(Tel : 02-2164-0174)

Flow Chart of PBBs and PBDEs analysis



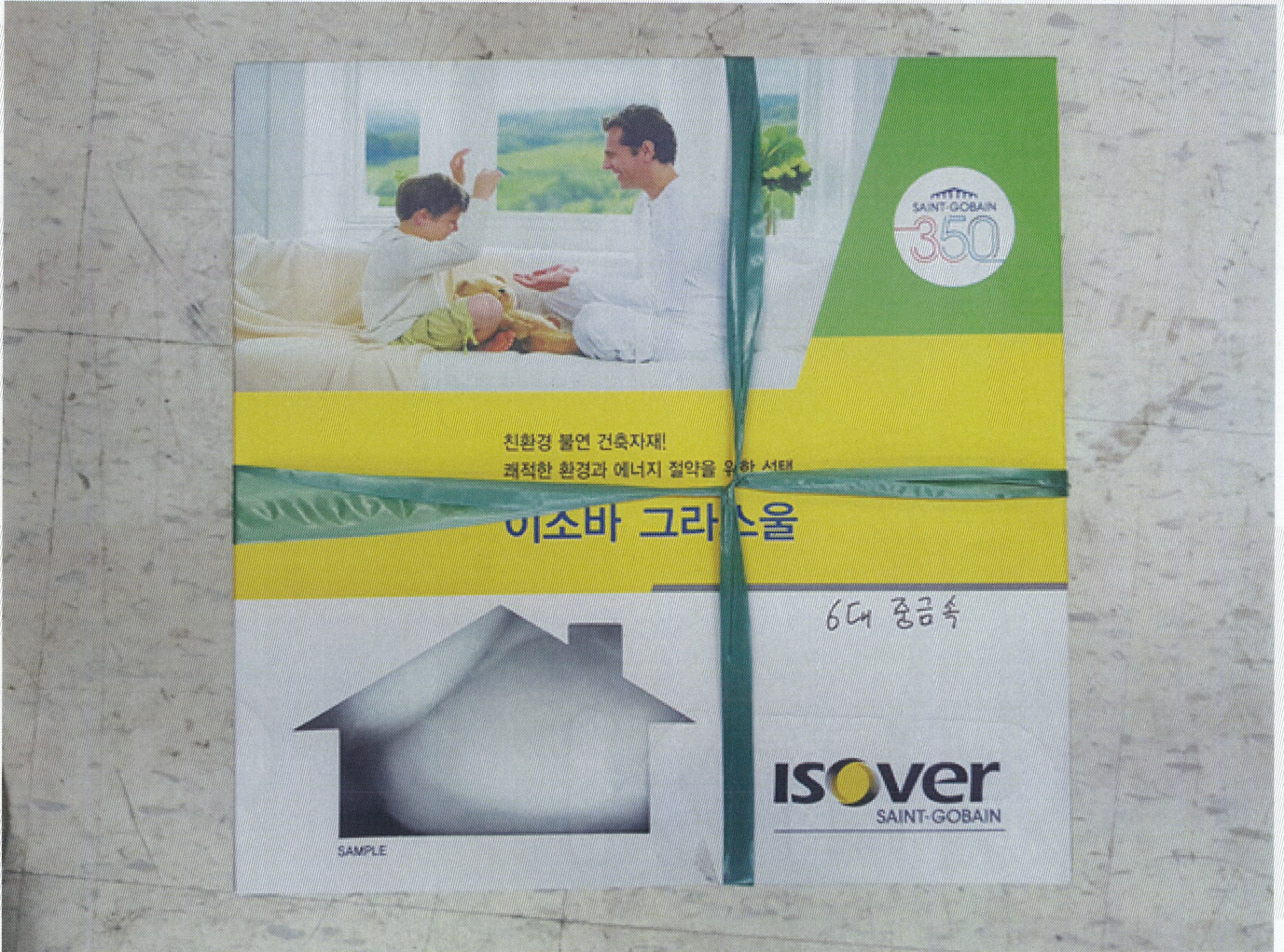


TEST REPORT

Report No. : TAK-2018-009388

Sample : Glass Wool

Sample



- End of Report -